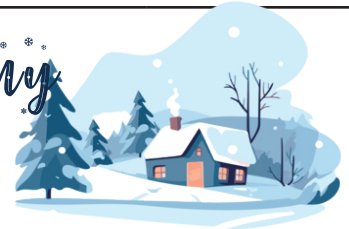

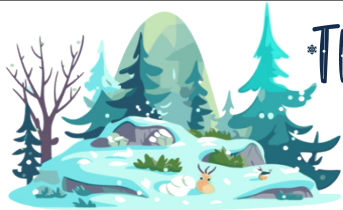


The New Standard Academy

FEBRUARY 2026 K-8 LUNCH

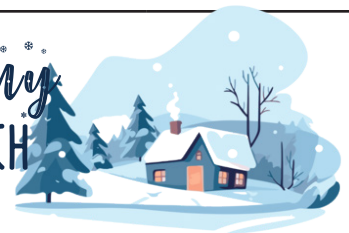



| Monday | Tuesday | Wednesday | Thursday | Friday | |
|---|--|----------------------------------|--|--|--|
| 2 | 3 | 4 | 5 | 6 | |
| All Beef Hamburger on a Whole Wheat Bun, Baked Beans, Peaches Fruit Cup, Milk | Beef and Cheese Taco, Carrots 100% Apple Juice Milk | Pizza Romaine Lettuce Apple Milk | Chicken Nuggets Green Beans Pineapple Tidbits Milk | BBQ Meatloaf WW Roll Mashed Potatoes and Brown Gravy, Banana Milk | |
| 9 | 10 | 11 | 12 | 13 | |
| All Beef Hot Dog on a Whole Wheat Bun Baked Beans Orange, Milk | Walking Taco with Whole Grain Chips, Carrots, 100% Fruit Punch, Milk | Pizza Romaine Lettuce Apple Milk | Chicken Tenders Mixed Vegetables Applesauce Milk | BBQ Beef Riblet on a Whole Wheat Bun Oven Brown Potatoes Banana Milk | |
| 16 | 17 | 18 | 19 | 20 | |
| President’s Day Mid-Winter Break | No School | No School | No School | No School | |
| 23 | 24 | 25 | 26 | 27 | |
| Beefy Mac n’ Cheese WW Roll Baked Beans Orange Milk | Beef and Cheese Taco Carrots 100% Orange Juice Milk | Pizza Romaine Lettuce Apple Milk | Popcorn Chicken Oven Brown Potatoes Pears Milk | Baked Mostacioli, WW Roll, Green Beans, Banana, Milk | |
| | | | | | |
| | | | | | |
| Please Note: Due to nationwide disruptions in the food and supply chain and based upon manufacturer and distributor product availability, this menu is likely to change with minimal notice. | | |  | | |
| All lunches include Meat or Meat Alternate, Fruits and Vegetables, Bread or Bread Equivalent, and Milk. Milk offered: Fat Free Chocolate or Low Fat White | | | | | This institution is an equal opportunity provider. |

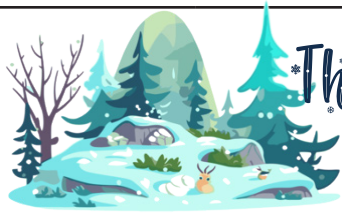


The New Standard Academy

FEBRUARY 2026 HIGH SCHOOL LUNCH

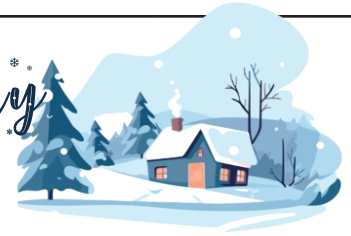


| Monday | Tuesday | Wednesday | Thursday | Friday | |
|---|--|----------------------------------|--|---|--|
| 2 | 3 | 4 | 5 | 6 | |
| All Beef Hamburger on a Whole Wheat Bun, Baked Beans, Peaches Fruit Cup, 100% Fruit Juice, Milk | Beef and Cheese Taco, Carrots 100% Apple Juice Milk | Pizza Romaine Lettuce Apple Milk | Chicken Nuggets Asst. Graham Green Beans Pineapple Tidbits 100% Fruit Juice Milk | BBQ Meatloaf WW Roll Mashed Potatoes and Brown Gravy, Banana, 100% Fruit Juice Milk | |
| 9 | 10 | 11 | 12 | 13 | |
| All Beef Hot Dog on a Whole Wheat Bun Baked Beans, Orange, 100% Fruit Juice, Milk | Walking Taco with Whole Grain Chips, Carrots, 100% Fruit Punch, Craisins, Milk | Pizza Romaine Lettuce Apple Milk | Chicken Tenders, Asst. Graham Mixed Vegetables Applesauce 100% Fruit Juice, Milk | BBQ Beef Riblet on a Whole Wheat Bun Oven Brown Potatoes Banana, 100% Fruit Juice, Milk | |
| 16 | 17 | 18 | 19 | 20 | |
| President’s Day Mid-Winter Break | No School | No School | No School | No School | |
| 23 | 24 | 25 | 26 | 27 | |
| Beefy Mac n’ Cheese WW Roll Baked Beans Orange, 100% Fruit Juice, Milk | Beef and Cheese Taco Carrots 100% Orange Juice, 100% Fruit Juice, Milk | Pizza Romaine Lettuce Apple Milk | Popcorn Chicken Asst. Graham Oven Brown Potatoes Pears, 100% Fruit Juice,Milk | Baked Mostacioli, WW Roll, Green Beans, Banana, 100% Fruit Juice, Milk | |
| | | | | | |
| | | | | | |
| Please Note: Due to nationwide disruptions in the food and supply chain and based upon manufacturer and distributor product availability, this menu is likely to change with minimal notice. | | |  | | |
| All lunches include Meat or Meat Alternate, Fruits and Vegetables, Bread or Bread Equivalent, and Milk. Milk offered: Fat Free Chocolate or Low Fat White | | | | | This institution is an equal opportunity provider. |



The New Standard Academy

FEBRUARY 2026 GSRP LUNCH



| Monday | Tuesday | Wednesday | Thursday | Friday |
|---|---|---|---|--|
| 2 | 3 | 4 | 5 | 6 |
| All Beef Hamburger on a Whole Wheat Bun, Baked Beans, Peaches Fruit Cup, Milk | Beef and Cheese Taco, Carrots 100% Apple Juice Milk | Pizza Romaine Lettuce Apple Milk | Chicken Nuggets Green Beans Pineapple Tidbits Milk | BBQ Meatloaf WW Roll Mashed Potatoes and Brown Gravy, Banana Milk |
| 9 | 10 | 11 | 12 | 13 |
| All Beef Hot Dog on a Whole Wheat Bun Baked Beans Orange, Milk | Walking Taco with Whole Grain Chips, Carrots, 100% Fruit Punch, Milk | Pizza Romaine Lettuce Apple Milk | Chicken Tenders Mixed Vegetables Applesauce Milk | BBQ Beef Riblet on a Whole Wheat Bun Oven Brown Potatoes Banana Milk |
| 16 | 17 | 18 | 19 | 20 |
| President's Day Mid-Winter Break | No School | No School | No School | No School |
| 23 | 24 | 25 | 26 | 27 |
| Beefy Mac n' Cheese WW Roll Baked Beans Orange Milk | Beef and Cheese Taco Carrots 100% Orange Juice Milk | Pizza Romaine Lettuce Apple Milk | Popcorn Chicken Oven Brown Potatoes Pears Milk | Baked Mostacioli, WW Roll, Green Beans, Banana, Milk |
| | | | | |
| | | | | |

Please Note:

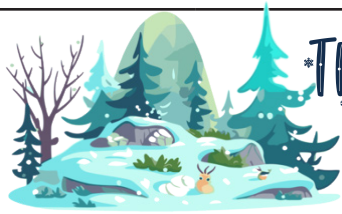
Due to nationwide disruptions in the food and supply chain and based upon manufacturer and distributor product availability, this menu is likely to change with minimal notice.

All lunches include Meat or Meat Alternate, Fruits and Vegetables, Bread or Bread Equivalent, and Milk.

Milk offered: Fat Free White or Low Fat White

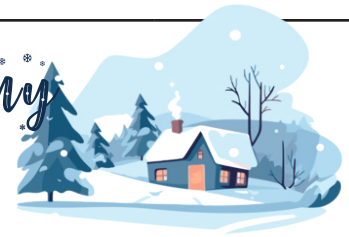


This institution is an equal opportunity provider.



The New Standard Academy

FEBRUARY 2026 K-8 BREAKFAST



| Monday | Tuesday | Wednesday | Thursday | Friday |
|--|--|---|---|--|
| 2 | 3 | 4 | 5 | 6 |
| Assorted Mini Muffin Fruit Cup 100% Fruit Juice Milk | Assorted Yogurt Graham Cracker Applesauce 100% fruit Juice, Milk | Cereal Bar Orange 100% Fruit Juice Milk | Strawberry Bagelful Banana 100% Fruit Juice Milk | Cereal Bar Apple Milk |
| 9 | 10 | 11 | 12 | 13 |
| Cereal Apple Cinnamon Applesauce 100% Orange Juice Milk | Pancakes Orange 100% Fruit Juice Milk | Snack'n Loaf Apple Slices 100% Apple Juice Milk | Pop Tarts Fruit Cup 100% Fruit Juice Milk | Benefit Bar Apple Milk |
| 16 | 17 | 18 | 19 | 20 |
| President's Day Mid-Winter Break | No School | No School | No School | No School |
| 23 | 24 | 25 | 26 | 27 |
| Assorted Mini Muffin Peach Cup 100% Apple Juice Milk | Assorted Yogurt Granola Red Delicious Apple Milk | Nutrigrain Strawberry Bar Pears, 100% Fruit Juice, Milk | Super Bakery Bread Slice 100% Orange Juice Milk | Ultimate Breakfast Round Fruit Cup 100% Fruit Juice Milk |
| | | | | |
| | | | | |

All breakfasts include Fruits and/or Vegetables, Bread or Bread Equivalent, and Milk.

Milk offered: Fat Free Chocolate or Low Fat White

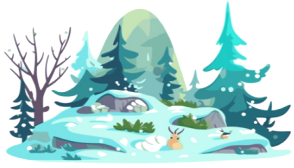
This institution is an equal opportunity provider.

Please Note:

Due to nationwide disruptions in the food and supply chain and based upon manufacturer and distributor product availability, this menu is likely to change with minimal notice.



This institution is an equal opportunity provider.



The New Standard Academy

FEBRUARY 2026 HIGH SCHOOL BREAKFAST



| Monday | Tuesday | Wednesday | Thursday | Friday |
|---|--|--|---|--|
| 2 | 3 | 4 | 5 | 6 |
| Assorted Mini Muffin, Cheese Stick Fruit Cup 100% Fruit Juice Milk | Assorted Yogurt Graham Cracker Applesauce 100% fruit Juice, Milk | Cereal Bar Orange 100% Fruit Juice Milk | Strawberry Bagelful Banana 100% Fruit Juice Milk | Cereal Bar Apple Milk |
| 9 | 10 | 11 | 12 | 13 |
| Cereal Apple Cinnamon Applesauce 100% Orange Juice Milk | Pancakes Orange 100% Fruit Juice Milk | Snack'n Loaf Cheese Stick Apple Slices 100% Apple Juice Milk | Pop Tarts Fruit Cup 100% Fruit Juice Milk | Benefit Bar Apple Milk |
| 16 | 17 | 18 | 19 | 20 |
| President's Day Mid-Winter Break | No School | No School | No School | No School |
| 23 | 24 | 25 | 26 | 27 |
| Assorted Mini Muffin, Cheese Stick Peach Cup 100% Apple Juice Milk | Assorted Yogurt Granola Red Delicious Apple Milk | Nutrigrain Strawberry Bar Pears, 100% Fruit Juice, Milk | Super Bakery Bread Slice 100% Orange Juice Milk | Ultimate Breakfast Round Fruit Cup 100% Fruit Juice Milk |
| | | | | |
| | | | | |

All breakfasts include Fruits and/or Vegetables, Bread or Bread Equivalent, and Milk.

Milk offered: Fat Free Chocolate or Low Fat White

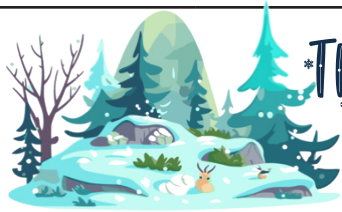
This institution is an equal opportunity provider.

Please Note:

Due to nationwide disruptions in the food and supply chain and based upon manufacturer and distributor product availability, this menu is likely to change with minimal notice.

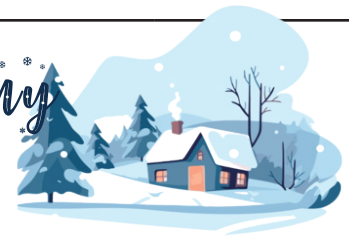


This institution is an equal opportunity provider.



The New Standard Academy

FEBRUARY 2026 GSRP BREAKFAST



| Monday | Tuesday | Wednesday | Thursday | Friday |
|--|---|--------------------------------------|---------------------------------------|---------------------------------------|
| 2 | 3 | 4 | 5 | 6 |
| Assorted Mini Muffin Fruit Cup Milk | Assorted Yogurt Graham Cracker Applesauce Milk | Cereal Orange Milk | Strawberry Bagelful Banana Milk | Assorted Mini Muffin Apple Milk |
| 9 | 10 | 11 | 12 | 13 |
| Cereal Apple Cinnamon Applesauce Milk | Pancakes Orange Milk | Snack'n Loaf Apple Slices Milk | Cereal Fruit Cup Milk | Bagelful Apple Milk |
| 16 | 17 | 18 | 19 | 20 |
| President's Day Mid-Winter Break | No School | No School | No School | No School |
| 23 | 24 | 25 | 26 | 27 |
| Assorted Mini Muffin Peach Cup Milk | Assorted Yogurt Granola Red Delicious Apple Milk | Cereal Pears Milk | Super Bakery Bread Slice Milk | Bagelful Fruit Cup Milk |
| | | | | |
| | | | | |

All breakfasts include Fruits and/or Vegetables, Bread or Bread Equivalent, and Milk.

Milk offered: Fat Free White or Low Fat White

This institution is an equal opportunity provider.

Please Note:

Due to nationwide disruptions in the food and supply chain and based upon manufacturer and distributor product availability, this menu is likely to change with minimal notice.



This institution is an equal opportunity provider.